

2022-2023

PLACEMENT BROCHURE

Datta Meghe Institute of Medical
Sciences
(Deemed To Be University)



dmimsu.edu.in

TABLE OF CONTENTS

- 03** THE UNIVERSITY
- 06** MEET THE CHANCELLOR
- 07** MESSAGE FROM THE STATUTORY OFFICERS
- 09** ABOUT THE COURSES
- 10** STUDENT PROFILE
- 11** TEACHING FACILITIES
- 12** RESEARCH ECOSYSTEM
- 13** INTERNATIONAL COLLABORATIONS
- 14** ALUMNI TESTIMONIALS
- 15** OUR RECRUITERS
- 16** FROM THE DESK OF PLACEMENT OFFICER
- 17** PLACEMENT CELL DETAILS

THE UNIVERSITY

Central India's pre-eminent center for learning

Located in Sawangi-Meghe (Wardha), about 80 km away from Nagpur (Maharashtra), Datta Meghe Institute of Medical Sciences (Deemed to be University) is an excellent place for pursuing academic excellence in Medicine, Dentistry, Nursing, Physiotherapy, Ayurveda, Pharmacy, Commerce and Management, Paramedical Sciences, Epidemiology, Online Distance Learning, Engineering, and Virtual Learning.

Away from the city, this sprawling 125-acre campus is a self-sustaining complex, well-connected by road, rail, and air (via Nagpur) to all the major cities in the country.

DMIMS was granted the status of a Deemed to be University, by the University Grants Commission on 24th May 2005. It has also been included in the list of Deemed to be Universities under 12 B of the UGC Act, 1956.

Ranked **NIRF 61**, DMIMS aims to offer a distinctive experience by maximizing the potential of students with professional attributes and broad-based research excellence, enabling beneficial translation. It runs 250+ programs having a total intake of 6000+ students per annum, out of which 750+ is international and 5000+ is the national intake.





DMIMS - DU

SINCE 1989...

262 COURSES OFFERED
5 HOSPITALS ON CAMPUS
56 PHD PROGRAMS
7 IN HOUSE JOURNALS

Acharya Vinoba Bhave Rural Hospital, Wardha
Siddharth Gupta Memorial Cancer Hospital, Wardha (Upcoming)

Shalinitai Meghe Hospital & Research Centre Nagpur
Dr. Babasaheb Ambedkar Super Speciality wing, Nagpur (Upcoming)

AVBRH'S Shalinitai Meghe Superspeciality Centre, Wardha

DMMC DATTA MEGHE MEDICAL COLLEGE
Beginning A New Chapter In The Course Of A Bright Medical Future of The Society.

>40 INTERNATIONAL COLLABORATIONS
Advanced Skills Lab Certified By American Heart Association
Virtual Simulation Lab



61st DATTA MEGHE INSTITUTE OF MEDICAL SCIENCES UNIVERSITY IN INDIA
34th JAWAHARLAL NEHRU MEDICAL COLLEGE IN INDIA
19th SHARAD PANWAR DENTAL COLLEGE IN INDIA

EXPANDING THE SCOPE OF OUR RECOGNITION.

'A' Grade Status
By Ministry of Education (formerly known as Min. of HRD) Govt of India
'A' Grade Status Ministry of Education Government of India & Re-accredited By NAAC
Proving The Higher Standards of Education.

Category - I University With Graded Autonomy by UGC
DMIMS(DU) ISO Certification
Enlisted U/S 12B of UGC Act 1956

SUPERSPECIALITY HOSPITAL
GRADE A+ NAAC ACCREDITATION DISTANCE SCORE 3.53 ON A POINT SCALE
AWARDED CATEGORY I UNIVERSITY BY UGC
CERTIFICATE OF EXCELLENCE FOR E-LEARNING

1500 BEDS
300 CRITICAL CARE BEDS

150 ACRE CAMPUS NAGPUR & WARDHA
12 FACULTIES
6 ADVANCED LEARNING SCHOOLS
1 CENTRE OF DISTANCE & ONLINE EDUCATION
23 HOSTELS (WARDHA: 21 HOSTELS, NAGPUR: 2 HOSTELS)
ENRICHED ACADEMIC AMBIENCE

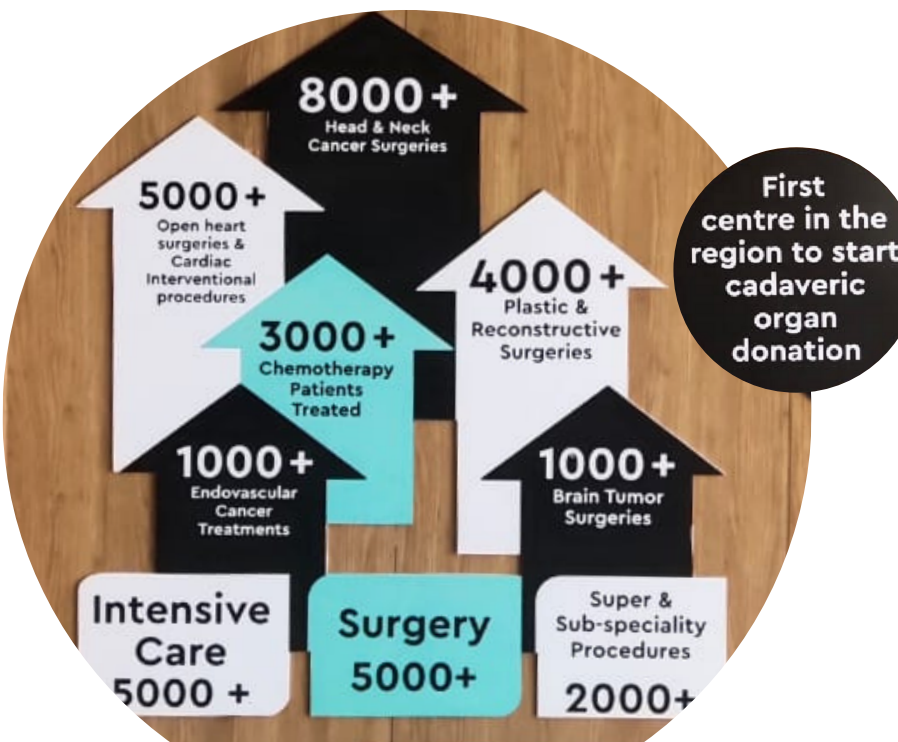
TRANSFORMING LIVES THROUGH WELL BEING...

5,700 Students Strength (Nagpur & Wardha)
>10000 Scientific Publications In All Databases

HIGHLY QUALIFIED & EXPERIENCED FACULTY
STATE OF THE ART INFRASTRUCTURE AND LABORATORIES

111 Patent Applications Published
62 Patents Granted
596 Registered Copyrights By Govt of India

NABL Diagnostic Centre Wardha
NABL Central Research Laboratory - JMMC Wardha
NABH Sharda Power Sival College Hospital
NABH Padma Sushil Ayurveda Hospital & Research Center, Wardha
ACCREDITATIONS & CERTIFICATIONS



Acharya Vinoba Bhave Rural Hospital 1525 beds NABH & NABL
Shalinitai Meghe Hospital & Research Centre 450 beds
AVBRH'S Shalinitai Meghe Superspeciality Centre 350 beds
AVBRH'S Mahatma Gandhi Ayurved College, Hospital & Research Centre 250 beds NABH
MORE THAN 2,500 BEDS

DMIMS DU Accredited with A+ Grade by NAAC | Awarded Category I University by UGC | Certificate of Excellence for E-Learning | **61st** NIRF RANKING 2021 | **34th** JAWAHARLAL NEHRU MEDICAL COLLEGE IN INDIA

SGMCH
Siddharth Gupta Memorial Cancer Hospital
Freedom From Cancer™



SGMCH SERVICES

- Surgical Oncology
- Medical Oncology
- Radiation Oncology
- Intensive Care Facility
- Interventional Radiology



MEET THE CHANCELLOR

"Education is the most powerful weapon which you can use to change the world."

SHRI. DATTAJI MEGHE
EX-MEMBER OF PARLIAMENT
(LOK SABHA)

Shri. Dattaji Meghe, the Founder and Chancellor of Datta Meghe Institute of Medical Sciences University has been active in public life for more than 40 years. He represented the people of Maharashtra in Lok Sabha for three consecutive terms and was also a member of Rajya Sabha.

He strongly believed that quality Education and Health only can bring about true transformation in the country. The "son of the soil" made a humble beginning in the fond memory of his beloved mother and started a medical college under the then Shrimati Radhikabai Meghe memorial medical trust, 30 years ago.

Since then, because of his vision and committed efforts the Institution has grown leaps and bounds by adding new courses and expanding its 'state of the art' infrastructure to the present monumental proportions.

Apart from the DMIMS(DU), under his leadership chain of CBSE schools, Engineering colleges, Banks, Spinning mills, and IT firms were established under various sister companies. The entire spectrum, right from Kindergarten to Postgraduation, was completed under his leadership, which has created new benchmarks of quality.



DR. VEDPRAKASH MISHRA
M.B.B.S., M.D., FMAS, MIRPM, B.
JOURN.

PRO-CHANCELLOR & CHIEF ADVISOR

It gives me immense pleasure to welcome you Datta Meghe Institute of Medical Sciences, Wardha.

DMIMS emphasizes on developing competent, confident, compassionate, and globally-relevant professionals. Our students are instilled with the practical aspects of learning by continuous exposure to internships and externships right from the very first year at the Institute.

Our vision is to emerge as a global center of excellence in higher education and we invite you to enable this vision.

VICE-CHANCELLOR'S MESSAGE

On behalf of the Datta Meghe Institute of Medical Sciences, I extend a warm welcome to your organization.

Over 30+ glorious years of existence as Central India's pre-eminent center for learning, DMIMS has made a mark by providing its students the knowledge and industry exposure, thus extending the excellence of DMIMS students beyond the classroom.

With great pleasure, I invite you to the University and we look forward to a mutually beneficial relationship.



DR. RAJIV BORLE
MDS (ORAL & MAXILLOFACIAL
SURGERY)



**DR. LALITBHUSHAN S.
WAGHMARE**

PRO-VICE-CHANCELLOR
MBBS, MD (PHYSIOLOGY)

PRO-VICE-CHANCELLOR'S MESSAGE

I feel proud in presenting to you Datta Meghe Institute of Medical Sciences.

Recognized as Central India's premier institute, it is spread across a sprawling 125-acre, the campus is a self-sustaining complex, well-connected to all the major cities in the country. The students not only go through the carefully crafted academic curriculum but are also exposed to the industry through various externships and internships.

On behalf of DMIMS, I extend a warm invitation to you! Looking forward to a fruitful association.

REGISTRAR'S MESSAGE

I welcome you all to Datta Meghe Institute of Medical Sciences.

Our highly qualified, committed, and friendly staff ensures that the experience at DMIMS is one that will be imprinted on students' minds as most rewarding and fulfilling. Our faculty members are committed to advising and working with the students to guide them with their academic and professional goals.

I take pride in cordially inviting you to be a partner in our endeavor and look forward to welcoming you to the recruitment program.



**DR. SWETA KALE
PISULKAR**

BDS, MDS, PH.D, FELLOW-
MAXILLOFACIAL
PROSTHODONTICS, M.PHIL,
MBA

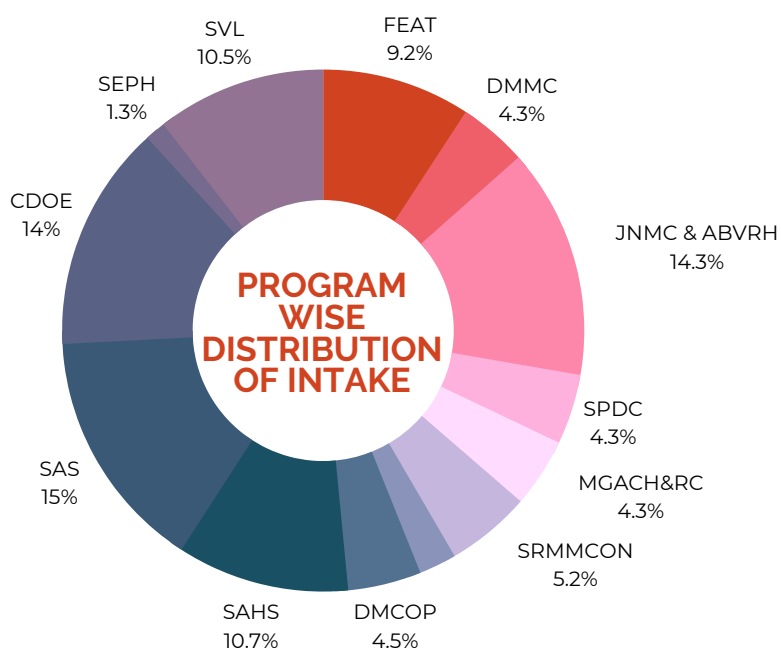
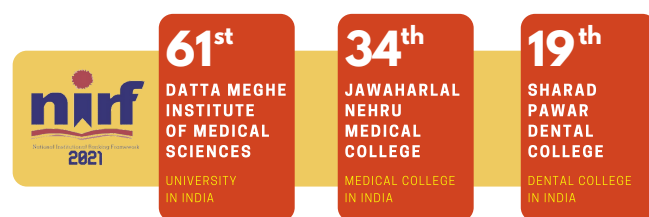
ABOUT THE COURSES

Students at DMIMS experience rigorous coursework. The diverse degree programs offer skill-oriented courses & teaching with adequate Hospital/Industrial Exposure.

250+
Courses
Offered

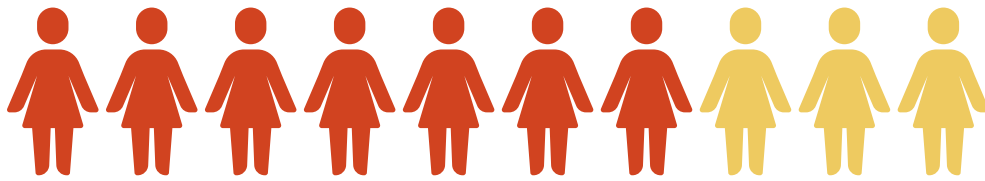
CONSTITUENT COLLEGES

- Jawaharlal Nehru Medical College (JNMC)
- Datta Meghe Medical College (DMMC)
- Sharad Pawar Dental College (SPDC)
- Mahatma Gandhi Ayurvedic College Hospital & Research Centre (MGACH&RC)
- Smt. Radhikabai Meghe Memorial College of Nursing (SRMMCON)
- Ravi Nair Physiotherapy College (RNPC)



- Datta Meghe College of Pharmacy (DMCP)
- School of Allied Health Sciences (SAHS)
- Faculty of Engineering & Technology (FEAT)
- Faculty of Commerce & Management (FCM)
- Faculty of Science & Technology (FST)
- School of Allied Sciences (SAS)
- Centre for Distance & Online Education (CDOE)
- School of Epidemiology & Public Health (SEPH)

STUDENT PROFILE

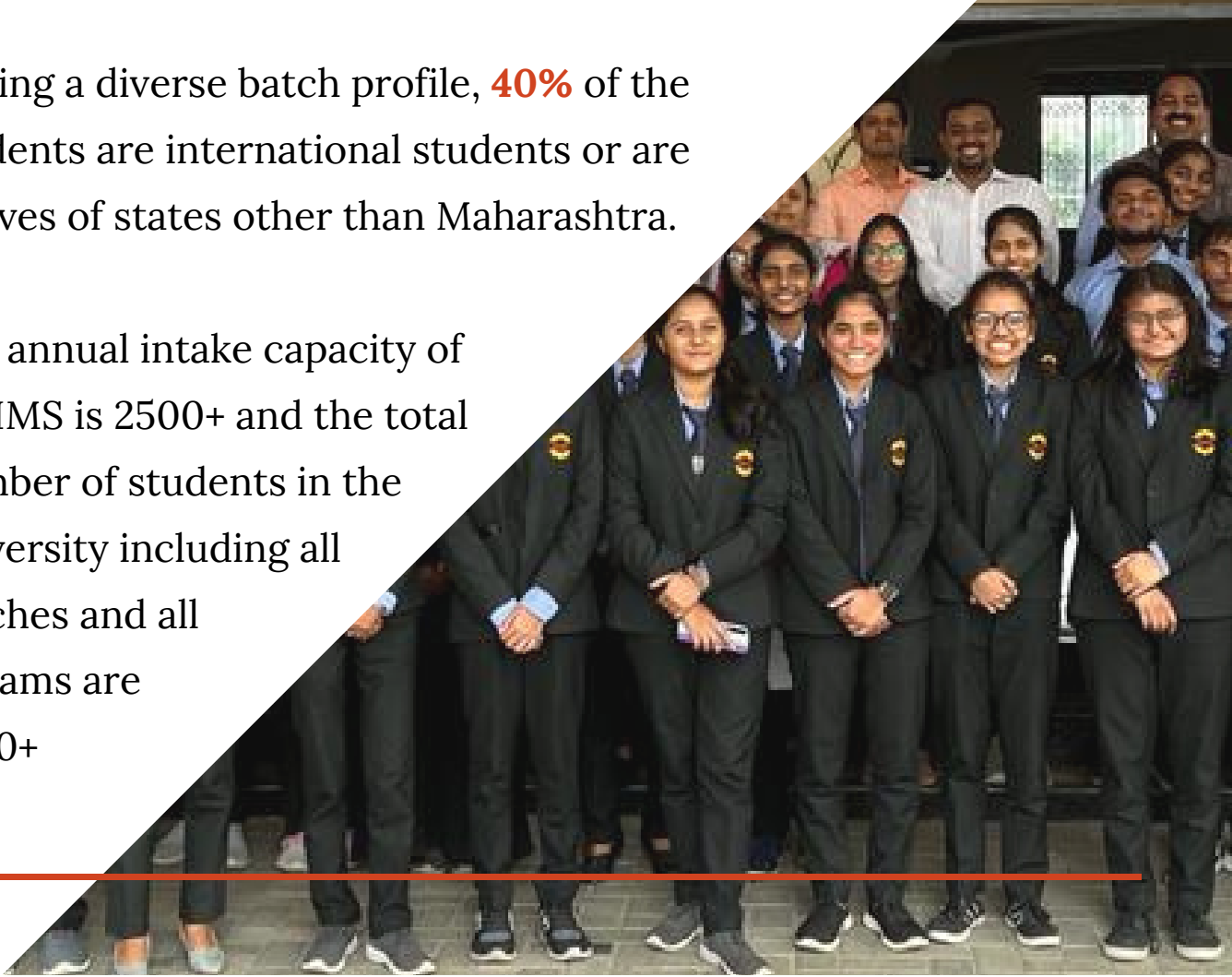


With a Male:**Female** ratio of 7:**13**, there are 1600+ Female Students across multiple degree programs, comprising **65%** of the total student strength



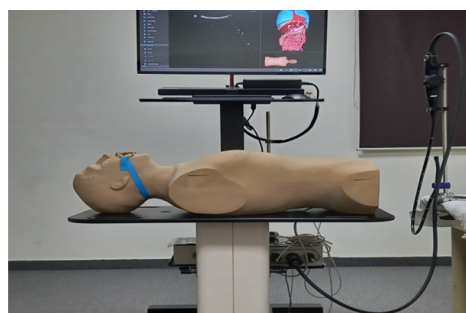
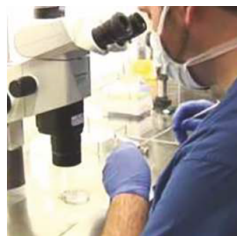
Having a diverse batch profile, **40%** of the students are international students or are natives of states other than Maharashtra.

The annual intake capacity of DMIMS is 2500+ and the total number of students in the university including all batches and all streams are 7000+



TEACHING FACILITIES

With State of Art Super specialty facilities and infrastructure of 125 Acre Land and 1.46 lac sq mt built up, DMIMS has 30+ glorious years of delivering qualified graduates in India and the Global healthcare system. There are a total of 650 Faculties, including professors from IITs and IIMs. Out of this, 34% of faculties have a Ph.D. qualification. DMIMS redefines Health Education Through Simulation Technology



RESEARCH ECOSYSTEM



INCUBATION CENTERS

BETiC
innovation Cell
In Association with
Biomedical Engineering and Technology (incubation) Center

Visvesvaraya National Institute of Technology, Nagpur
Indian Institute of Technology, Bombay
College of Engineering, Pune

NGI
NewGen
IEDC
Transform Idea into Innovation

INSTITUTION'S INNOVATION COUNCIL
(Ministry of HRD Initiative)



Co-funded by the Erasmus+ Programme of the European Union

INTERNATIONAL COLLABORATIONS



RAK Medical & Health Sciences, UAE
John Hopkins University, USA
Morumbi University, Brazil
University of Sheffield, UK

Harvard University, USA
Michigan State University, USA
Liverpool John Moore University
Padova University, Italy
University of Sydney, Australia
Chester University, UK
California University, USA
WHO, Switzerland
and more...



ALUMNI TESTIMONIALS



Priyal Shrivastava

It always feels special being a part of DMIMSU. It's amazing to see how the university has excelled in deepening its academic offerings and research focus over a period and how it strives to sharpen the skills of the budding doctors towards competency building. I believe our faculties are truly a prized asset of our institution. My institution goes an extra mile to provide its students with varied opportunities!



Anuradha Nayudu

The BDS program offered at SPDC, Sawangi, serves as a fast-paced, fully immersive training program in the fields of oral health sciences, dental technology, and dental research. During the program, students work together and with top-ranked dental faculty, medical doctors, and researchers to learn to analyze, diagnose, and treat all manners of dental diseases and disorders.



Alumni - Ms Sayed

When I cleared my Dentistry, I was looking forward to specialization courses in and out of state when I went to DMIMS I was totally mesmerized by the infrastructure of the university and when I got into it as a student I was amazed! It was a great learning experience to be in that facility and experience it for real. There is amazing quality and quantity of patient exposure which was my first priority when I got into the institute.



Alumni - Nina Joshi

I am from California and I am also a SPDC alumni, I came to India to study. I am very grateful and thankful to my teachers and professors who have nurtured me and provided me with the core base of my education. I am also grateful to SPDC for providing me with the love the relationships and the friendships that I made. Our campus is very beautiful! In 2019 I visited Sawangi again! I am ever so grateful for the foundation I have received in Sawangi.

OUR RECRUITERS & PARTNERS





DR. ROOPESH RAO
 TRAINING AND PLACEMENT
 OFFICER
 PH.D, MBA

FROM THE DESK OF PLACEMENT OFFICER

Datta Meghe Institute of Medical Sciences is Central India's pre-eminent center for learning with a strong academics-industry linkage. State of art teaching facilities with the latest Simulation Technology provide students with a great learning opportunity, shaping and nurturing their young minds.

I firmly believe that our students are well equipped to translate the skills learned in class into hands-on industry applications and will make significant contributions to any organization that they become a part of.

Industry Institute Interaction

CCE liaises with various industries to facilitate **training**, get **industry-certified courses**, **live projects**, and provide the best possible **placement** opportunity while organizing relevant **guest lectures/ seminars/interactive sessions**.

Placements

From finding and converting leads to taking care of the placement process **end to end**, CCE works tirelessly in **placing students** in reputed organizations.



MoU

With CCE's initiative, the university signs **MOUs** with multiple organizations across various industries.

Recruitment Training

With the objective to meet industry requirements, make students placement ready, and to create a **quality human resource**, comprehensive training is provided to every student and is imparted by professionals.

Entrepreneurship Development Interaction

Collaborating with the research center, CCE provides necessary information, encouragement, and guidance to the students to become **successful entrepreneurs**.

PLACEMENT CELL DETAILS

Center for Career Enhancement
(Placement Cell)



CONTACT PERSON Dr. Roopesh Rao



Sawangi(Meghe), Wardha



+91-9823253289



<https://dmimsu.edu.in/>



roopeshrao@dmimsu.edu.in
placements@dmimsu.edu.in