



DATTA MEGHE
INSTITUTE OF HIGHER
EDUCATION & RESEARCH
(DEEMED TO BE UNIVERSITY)

LEARN. LEAD.

**ITS ALL HERE
EVERY DREAM, EVERY GOAL.**

Empowering Tomorrow's
Pharmacists Through

**Knowledge and
Research**



DATTA MEGHE COLLEGE OF PHARMACY

A constituent unit of DMIHER (DU)



NAAC
ACCREDITED WITH CGPA (3.78)
A++



RANK 24
Dental College

RANK 42
University in India



Awarded
Category I
University by UGC

3rd
In India
GOOD HEALTH AND
WELLBEING
SDG 3

15th
In the World
GOOD HEALTH AND
WELLBEING
SDG 3

THE IMPACT
RANKINGS
2024

ABOUT UNIVERSITY

DMIHER is a multidisciplinary university located in Sawangi Meghe, Wardha, which is 80 kms from Nagpur, and offers a very conducive environment for high-quality education. Driven by the purpose of Learn and Lead, the university believes in inspiring the students for a meaningful, impactful future where they contribute to the society through professional accomplishment.

Our Hon'ble Chancellor's Message

“At DMIHER we have a strong focus on Developing well-balanced professionals capable of dealing with the challenges of a fast-changing world. Students are gently, but constantly encouraged to reach higher, to learn and lead”



UNIVERSITY HIGHLIGHTS



Category-I Deemed to be University under UGC for Categorization of Universities for Grant of Graded Autonomy Regulations 2018



'A++' Accreditation (Fourth Cycle) by 'NAAC' in 2023



Ranked 42nd among universities in India by NIRF 2024



15 constituent colleges



Competency and outcome-based Education in all academic programs



50+ collaborations with top institutions across the globe



Research with 10,000+ publications in last 3 years and 97 patents



1250+ copyrights reserved



Faculties with Global University Pedigree



Simulation based learning and access to industry project and social immersion Projects



50000+ Alumni

ABOUT DMCP

- » Welcome to **Datta Meghe College of Pharmacy**, where tradition meets innovation! Located in the heart of Sawangi (Meghe), Wardha, our institution is dedicated to nurturing future pharmacy professionals with state-of-the-art facilities, experienced faculty, and a curriculum that bridges theory with practical industry applications.
- » Datta Meghe College of Pharmacy was established under ambit of Datta Meghe Institute of Higher Education & Research (Deemed to be University) in June 2019. The college is approved by Pharmacy Council of India, New Delhi and permanently affiliated to the Datta Meghe Institute of Higher Education & Research (Deemed to be University).
- » The college currently offers D.Pharm, B.Pharm, Pharm.D, M.Pharm in Pharmaceutical Quality Assurance, Regulatory Affairs, Pharmaceutic, Pharmacology and Ph.D. in Pharmaceuticals Sciences.

VISION

- » To impart effective education and promote productive Pharmaceutical research to generate commensurate solutions to contemporary and long-term concerns and challenges confronting the Pharmaceutical arena to foster sustainable development in the interest of men and mankind.'

MISSION

- » To Develop globally relevant professionals through competency-based education.
- » To Produce skilled professionals for effective healthcare systems.

KEY OFFICIALS



Dr. Anil M. Pethe
DEAN



Dr. Deepak S. Khobragade
DEAN ACADEMICS



Dr. Surendra S. Agrawal
VICE-DEAN

MESSAGE FROM THE DEAN



Welcome to Datta Meghe College of Pharmacy, Sawangi (Meghe), Wardha!

At our institution, we are dedicated to providing high-quality education through a team of well-qualified faculty members who mentor and guide students toward excellence in pharmaceutical sciences. Our strong industry connects and placement cell ensures promising career opportunities by bridging the gap between academics and industry requirements. Through Coursera courses and our Virtual Training Center, students gain access to global learning resources, enhancing their knowledge and skills.

With a 1500+ bed hospital, a well-equipped preclinical and clinical setup, and a dedicated Research House, we provide extensive hands-on training and research opportunities. Our Machine Room enables students to develop pharmaceutical formulations, while our Herbal Garden fosters expertise in natural drug research. The Pharmacy Museum offers insights into the evolution of pharmaceutical sciences. Beyond academics, we encourage extracurricular activities to promote holistic development, leadership, and teamwork.

Join us in this journey of innovation, learning, and professional success. Together, let's shape the future of healthcare.

Dr. Anil M. Pethe
DEAN

Empowering Your Education with World-Class Expertise



Dr. Stephen Kerr

Professor and Associate Provost of Academic and International Affairs at Massachusetts College of Pharmacy and Health Sciences, Boston USA



Dr. Prashant Sakharkar

Associate Professor and Director of Graduate Program, Department of Clinical and Administrative Sciences, Larkin University, Miami, USA



Dr. ODEKU, Oluwatoyin Adepeju (Nee Adeyemo)

Professor & Dean at University of Ibadan, Ibadan, Nigeria



Dr. Vishal Pendharkar

Director DMPK BenevolentAI, Cambridge, England, United Kingdom



Dr. Yogeshwar Bachhav

Associate Director (Pharmaceutical Development), Consultant at AiCuris Anti-infective Cures AG, Germany



Dr. Long Ming

Professor & Deputy Dean Research, School of Medical & Life Sciences, Sunway University, Malaysia

WHY CHOOSE DMCP?

» Strong Industry Connect & Placement

Collaborations with top pharmaceutical companies and healthcare institutions ensure internships, live projects, and job placements.

» Advanced Learning Facilities

Anukruti Simulation Centre & Jigyasa Interactive Museum provide experiential learning in drug formulation and patient counseling.

» Strong Research Culture

Encourages UG students in scientific projects, publications, and national conferences.

» 1500 + Bedded Teaching Hospital for Clinical Practice

Hands-on training in hospital pharmacy, patient care, and pharmacovigilance.

» Coursera Certified Campus

Access to global courses for certifications in pharmaceutical technologies, regulatory affairs, and clinical research.

» Preclinical & Clinical Labs

Practical exposure to drug testing, toxicology, and clinical trials.

» World-Class Faculty

– National and international experts from USA, UK, Singapore, UAE, and Germany ensure a global learning experience.

Learn Beyond Textbooks through Advanced Labs & Research Facilities

DMCP provides modern and advanced research and training facilities, including a Simulation Lab, Advanced Nanotechnology Lab, and a state of the art Animal House for preclinical studies. It also features a Pilot Plant for dosage form manufacturing and an Advanced Analytical Lab with instruments like HPLC, GC, HPTLC, and more.



COURSES OFFERED

BACHELOR OF PHARMACY (B.Pharm)

Intake: 100

ELIGIBILITY

- » Completion of 10+2 with Physics, Chemistry, Maths/Biology(PCM/PCB) and scoring a minimum of 45% and 40% aggregate marks for unreserved and reserved category respectively. Qualifying DMIHER CET or MHT CET.

HIGHLIGHTS

- » A four-year undergraduate program designed for individuals aspiring to pursue a career in pharmaceutical sciences. This course provides in-depth knowledge of pharmacokinetics, pharmacodynamics, drug formulation, and dispensing practices. It equips students with the essential skills required for drug development, quality control, and patient-centric medication management in the healthcare industry.

DIPLOMA IN PHARMACY (D.Pharm)

Intake: 60

ELIGIBILITY

- » Candidates must have passed the higher secondary examination (10+2) with Physics, Chemistry, and Biology/ Mathematics.

HIGHLIGHTS

- » Two-year career-focused program designed for individuals aspiring to enter the pharmaceutical and healthcare sectors. This course provides fundamental knowledge in pharmacology, pharmaceutical chemistry, drug dispensing, and patient care, serving as a foundation for careers in retail and hospital pharmacies, drug manufacturing, and regulatory affairs.

MASTER OF PHARMACY

ELIGIBILITY

- » B. Pharm degree from any college recognized and approved by P.C.I. and who have secured at least 55% marks.
- » Any other qualification approved by PCI as equivalent to any of the above examinations.
- » Qualifying DMIHER CET.

MASTER OF PHARMACY IN PHARMACEUTICAL QUALITY ASSURANCE

Intake: 15

HIGHLIGHTS

- » A 2-year postgraduate program designed to develop expertise in quality control, regulatory affairs, and compliance within the pharmaceutical industry. Students gain in-depth knowledge of Good Manufacturing Practices (GMP), drug validation, analytical techniques, and global regulatory frameworks, preparing them for careers in quality assurance, R&D, and regulatory compliance.



MASTER OF PHARMACY IN REGULATORY AFFAIRS

Intake: 15

HIGHLIGHTS

- » M.Pharm in Regulatory Affairs is a 2-year postgraduate program focused on pharmaceutical laws, regulatory guidelines, and compliance standards for drug development and approval. Students gain expertise in global regulatory frameworks (FDA, EMA, ICH), dossier preparation, drug safety regulations, and quality assurance, preparing them for careers in regulatory affairs, pharmacovigilance, and compliance management in the pharmaceutical industry.

*MASTER OF PHARMACY IN PHARMACEUTICS

Intake: 15

HIGHLIGHTS

- » A 2-year postgraduate program designed to build advanced expertise in drug formulation, development, and delivery systems. Students gain in-depth knowledge of pharmaceutical technology, biopharmaceutics, novel drug delivery systems, and industrial pharmacy practices. The program prepares graduates for careers in formulation R&D, production, quality control, and pharmaceutical product development in both academia and industry.

*MASTER OF PHARMACY IN PHARMACOLOGY

Intake: 15

HIGHLIGHTS

- » A 2-year postgraduate program focused on developing advanced knowledge in pharmacological sciences, drug development, and therapeutic research. Students gain expertise in preclinical and clinical evaluation of drugs, pharmacokinetics, pharmacodynamics, and molecular pharmacology. The program prepares graduates for careers in research and development, clinical trials, drug safety, and academic or industrial pharmacology.

DOCTOR OF PHARMACY (Pharm D.)

Intake: 30

ELIGIBILITY

- » Completion of 10+2 with Physics, Chemistry, Maths/Biology (PCM/PCB) **OR** D.Pharm. from P.C.I approved institution. Qualifying DMIHER CET or MHT CET.

HIGHLIGHTS

- » A 6-year professional doctoral program that provides in-depth knowledge of clinical pharmacy, pharmacotherapeutics, and patient care. Students gain expertise in drug therapy management, hospital pharmacy, pharmacovigilance, and clinical research, preparing them for roles in healthcare, clinical practice, and pharmaceutical industries.

*Note : Admissions to the course subjected to PCI approval.



VARIOUS COMMITTEES & CLUBS

Student Council Committee

Student Welfare Committee

Placement Committee

Literature Club

Quiz Club

Nature's Club

Sports Club

Dance Club

Photography Club



STUDENT'S ACHIEVEMENTS

"DMCP Students are Excelling Globally, Leading the Future!"

We celebrate our students :



Mr. Ajay Shadija

for completion of
MS in Advanced Pharmacology,
University of Strathclyde, Glasgow, Scotland



Ms. Manali Wanjari

for securing admission in
Mres. in Drug Delivery and Nano Medicine
University of Newcastle, UK

STUDENT TESTIMONIALS



» MR. SATVIK BHUTADA

As a student at Datta Meghe College of Pharmacy, I can confidently say it is an enriching experience. The faculty is highly knowledgeable and supportive, providing a conducive learning environment. The practical exposure and research opportunities are invaluable in shaping my skills. The campus facilities are top-notch, enhancing the overall academic journey. I am grateful for the holistic education and personal growth I am gaining at DMCP.



» Ms. Isha Mangate

As a first-year M. Pharm (Regulatory Affairs) student at Datta Meghe College of Pharmacy, I am privileged to be part of an institution that emphasizes academic excellence and industry readiness. The college offers a strong research culture, Coursera courses for global exposure, and guidance from highly qualified faculty in Regulatory Affairs. The six-month industrial training provides hands-on experience, while practicals based on RA case studies enhance our analytical skills. DMCP bridges the gap between theory and real-world applications, preparing us for regulatory challenges in the pharmaceutical industry. I am grateful for this enriching and career-focused learning environment."

EMINENT ALUMNI



» MS. JANVI CHATURKAR

Datta Meghe College of Pharmacy provided me with an excellent academic foundation and research exposure, helping me qualify for GPAT and secure admission to BCP Mumbai for my master's. The guidance from experienced faculty, along with the research-driven environment, played a key role in my success. I am grateful to DMCOP for shaping my future in pharmaceutical sciences.



» MR. MAKRAND SOMALKAR

Datta Meghe College of Pharmacy provided me with a strong foundation during my D.Pharm journey, preparing me for higher studies. The experienced faculty, hands-on training, and supportive learning environment helped me build confidence and excel academically. The knowledge and skills I gained at DMCOP enabled me to secure admission to a reputed institution for my B.Pharm.

Career Acceleration Opportunities at DMCP

DMCP ensures strong career opportunities. Top recruiters from healthcare, pharmaceutical, and researching sectors offer excellent placements. With a highest package of ₹6 LPA and an average package of ₹3.00 LPA.



ACHARYA VINOBA BHAVE
RURAL HOSPITAL
Transforming Lives Through Well Being



Glaxo Smith Kline

PRANAV SHANGONDAWAR

Package : 4.83 LPA



Alembic Pharmaceuticals

SWAGAT BORULE

Package : 3.00 LPA



Alembic Pharmaceuticals

TEJAS BURILE

Package : 3.00 LPA



Meditab Software

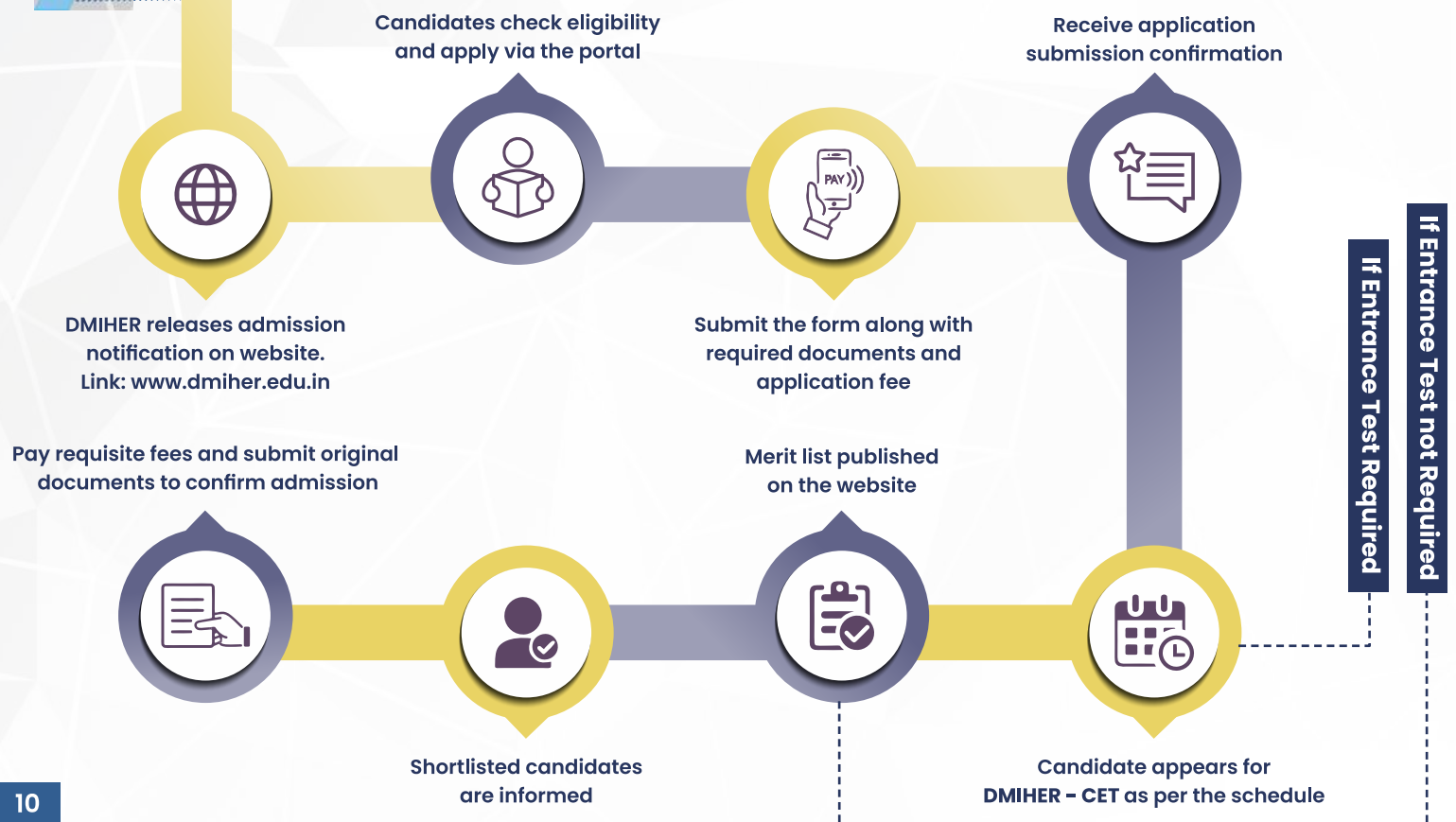
JANHVI MIRAPURKAR

Package : 2.58 LPA

PHOTO GALLERY



ADMISSION FLOWCHART





DMIHER
LEARN. LEAD.

Scan to Apply !



CONTACT US:

Admission Cell



8888040999

Admission Counselor



7823832811

 **DMIHER, Main Campus, Sawangi (Meghe), Wardha 442001**



www.dmiher.edu.in